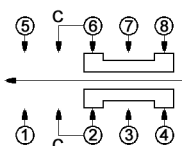
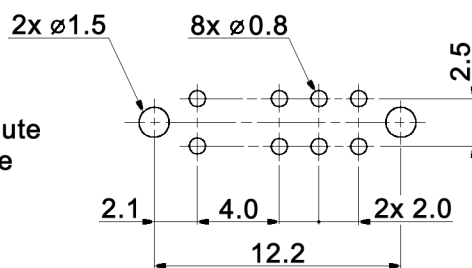


CIRCUIT DIAGRAM
C: COMMON PIN



timing not specified

HOLE LAYOUT $\oplus 0.05$
TOP VIEW



Specifications:

- Contact rating: 0.2A, 12V DC
- Contact resistance: 20mOhm max.
- Insulation resistance: 100MOhm min. at 500V DC for 1 minute
- Dielectric strength: 500V AC (50/60Hz, 2mA) for 1 minute
- Operating temperature: -40°C to +85°C
- Mechanical life: 10 000 cycles
- Operating force: a-b c-b: 200 +/-100gf
b-c b-a: 250 +/-100gf
- Soldering conditions: 260 +/-5°C, 5 +/-1sec.
- Material: Contact clip: phosphor bronze, silver plated
Slider: PA46, black
Terminal: brass strip, silver plated
Base: phenolic resin, natural
Spring plate: stainless steel, natural
Frame: steel, tin plated

x	Length
empty	4.0 mm
8	8.0 mm

Compliance: RohS II (2011/65/EU)

Tolerances:	Date	Name
up to 10: ±0.2mm	04/10	dr
above 10-50: ±0.3mm		
Operating temperature	02/17	dr
Rename	03/16	dr
Soldering conditions	02/15	dr
Operating temperature	07/13	dr
Modifications	Date	Name

MFP 213 P-RA-x

knitter-switch

30 20 82

Page

1/1